

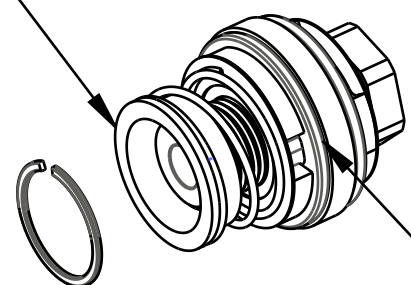
4

3

2

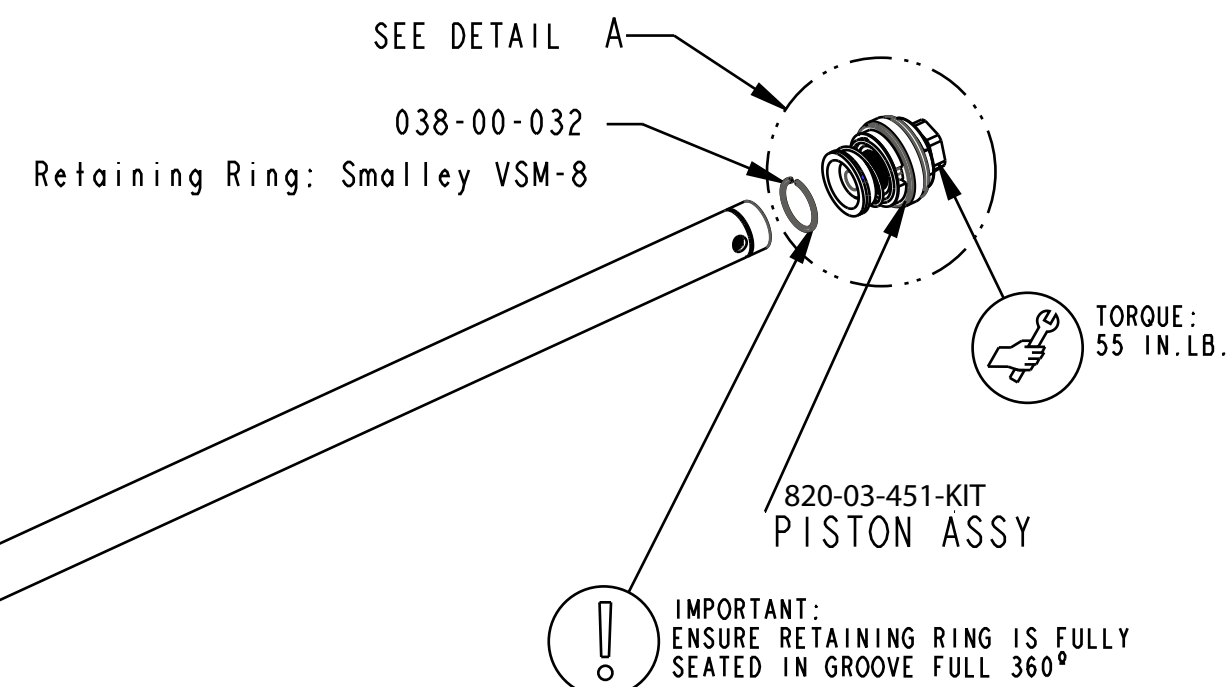
1

! IMPORTANT:
LARGER OD OF THE SPRING PERCH
GOES AGAINST THE RETAINING RING



! IMPORTANT:
ENSURE VALVES ARE NOT
PINCHED DURING ASSEMBLY

DETAIL A
SCALE 2:1



SEE DETAIL A

038-00-032

Retaining Ring: Smalley VSM-8

TORQUE:
55 IN.LB.

820-03-451-KIT
PISTON ASSY

! IMPORTANT:
ENSURE RETAINING RING IS FULLY
SEATED IN GROOVE FULL 360°

039-00-326
Spring: Rebound Needle, Stiff, FIT CTD

210-22-441
Needle, Rebound, Smaller ID Damper Shaft, 010 RL-RLC

DAMPER TUBE

REBOUND TUBE

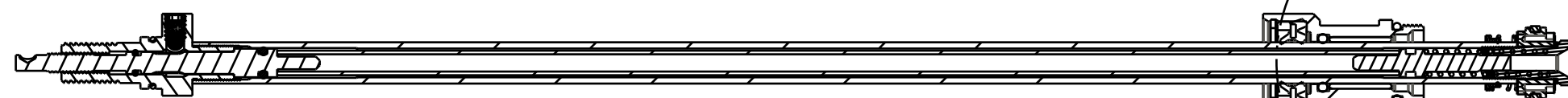
GREASE:
THIN LAYER OF SLICK HONEY
ON BULLET TOOL

TORQUE:
55 IN.LB.

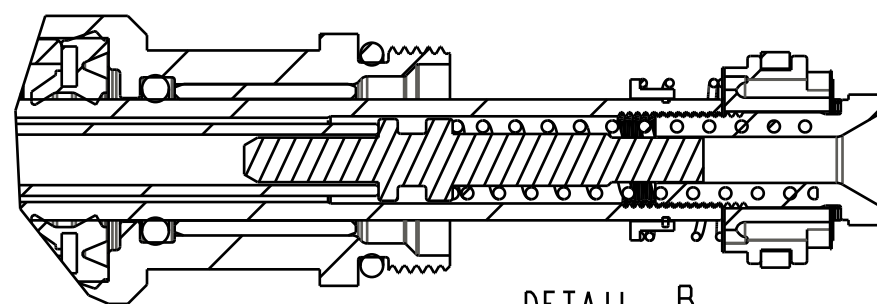
820-03-396-KIT
SEALHEAD

820-03-185-KIT
REBOUND ADJUSTER

SEE DETAIL B



SECTION A-A



DETAIL B
SCALE 2:1

FOX FOX Factory, Inc. Ph 831-768-1100
130 Hangar Way, Watsonville, CA 95076 USA Fax 831-768-9312

TITLE
**2015 34 FIT
iCTD Damper Shaft Assy**

SIZE DWG. NO.
C
PLOT SCALE 0.85:1 SHEET 1 OF 1

- PROPRIETARY -
THIS DOCUMENT CONTAINS CONFIDENTIAL, PROPRIETARY INFORMATION
THAT IS FOX PROPERTY. DO NOT DISCLOSE TO OR DUPLICATE
FOR OTHERS EXCEPT AS AUTHORIZED BY FOX.

4

3

2

ProE ASSEM